



01 Val de Toran. Typical towns near the border of French, full of charm, surrounded of humid forest of beech and firs. At the end of the highway is the Honeria Refuge, a starting point for several hiking trails. It is recommended to visit to any of the towns in order not to miss their attractiveness Porcingles, Bordius, Sant Joan de Toran ...



02 Bausen and Carlac Forest. This beautiful hill walking trip of about 3 hours begins in the town of Bausen and passes through beautiful landscapes and a leafy forest of millennium beeches.



03 Les-Baronia de Les. This journey passes through Lower Aran, to banks of the Garonne river, from Bossòst to the town of Les, and continues along a beautiful road until the **Chapel of San Blas** (RRd'Aran), located next to the old residence of the Barons of Les under the old feudal castle (centuries XII-XV). In this population can also enjoy a visit to the **Factoria deth Caviar Nacari**. Besides being able to relax in the thermal center "Termes Baronia de Les".



Adventure Park / Naturaran - Les. The Adventure Park in the trees is an exciting outdoor physical activity which is a totally different experience. It is located in the Cauarca Campground in Les. The Park has circuits which range from 50 cm to 11 m in height with different levels of difficulty. Moreover, there are a total of 11 zip lines which take you quickly to the ground.



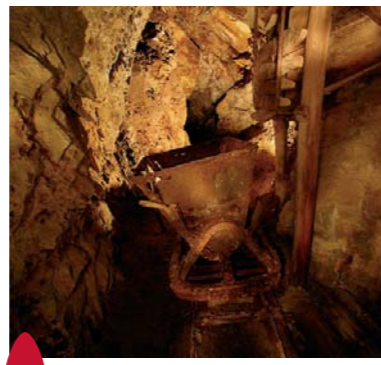
Via Ferrata (Fixed Climbing Route) - Les
Located behind the Cauarca Campground this 450 m long route is divided in two itineraries. The lower one is only for experts and the higher one is for all levels. The route also includes an 11 meter Tibetan bridge with a fall of 200 meters (3 hours in total approximately).

04 Bossòst - Church Mair de Diu dera Purificacion (RRd'Aran). A walk through the town will lead to us the laundry and seven chapels that surrounding the village.



05 Wildlife Park-Aran Park - Bossòst. New fauna park located in the Portilhòn Pass area. The trails lead to various species of animals in semi-liberty such as white and gray wolves, bears, deer, lynx, marmots.... This route concludes with a visit to an educational museum.

06 Portilhòn and Còth of Baretja - Bossòst. Access from the town of Bossòst through the highway of the Portilhòn, see a pretty forest of firs and enjoy a beautiful, spectacular view from the Còth of Baretja. Found between 1200-1800 m. altitude.



07 Minas Victoria. The mines are the testimony to a lost way of life. In the summer months guided visits can be taken.



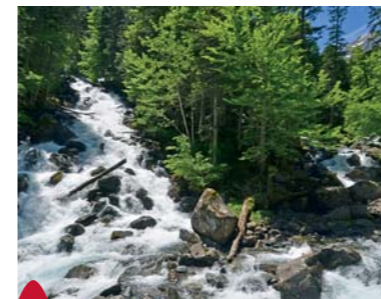
08 Vilamòs- Cò de Joanchiquet. This house, together with the "lauader" (public laundry) and "horn de Caudia" (lime oven) will transport you through the traditional life in an aranes town during the XVIII centuries to the start of the XX Century. **Church Sta. Maria** (RRd'Aran).

09 Casa deth Senhor d'Arròs. An elegant house of the XIX century is today the headquarters of Archiu Istòric Generau.



10 Saut deth Pish. An impressive waterfall easily accessed via asphalt forest footpath of 12 km, which travels trough part of the Val de Varradòs. Also offers some spectacular views over the Maladeta rock. Accessible from Pont d'Arròs and Vilamòs.

11 Oles Reservoir and Varicauba Forest. Can be accessed from the towns of Gausac, is Borders and Aubert, an easy journey which is surrounded by Varicauba forest. The Bassa d'Oles, at the end of the journey, it is one of the few reservoirs with motorized access. Provides an enjoyable day out for all the family. The walk passed through the batalher Plan into a picnic area. In the Forest of Varicauba find **Val d'Aran Mountain Bike Park**, circuit suitable only for professionals.



12 Artiga de Lin and Uelhs deth Joeu. An asphalt forest footpath of 9 km that travels through the beautiful Ribera del Joeu beautiful, which upon reaching its highest point, arrives in the marvellous natural park of "Plan dera Artiga". This is a starting point of several walks; which gives access to the birthplace of the river, more well-known as "Uelhs Joeu deth Joeu". These waters disappear in the Aneto glacier and after circulating underground for 4 Km., they appear in this marvel of nature.

13 Church St. Pèir-Betlan (RRd'Aran). Close to Betlan, visit the cave of Mandronius giant, a legendary character who died fighting against the Romans.

14 Church St. Estèue - Montcorbau (RRd'Aran).

15 Church St. Fèlix - Vilac (RRd'Aran).

16 Val de Salient. Their situation in the central part of the valley provides a magnificent vantage point in the Mijaran: the forest footpath which leaves from Vilac rises to 2000 m. This allows enjoyment of wide alpine grasslands and enables reaching summits like the Tuc d'Arenho or the Brush (2546 m) without much effort. About 5 km after Vilac, and on the same footpath, find the Mirador Ribera deth Salient, converted into a picnic area surrounded with red pine, with immeasurable views of Vielha. An all terrain vehicle is advisable.

17 Church St Martin de Tours-Gausac (RRd'Aran).

18 Church St. Andreu - Casau (RRd'Aran).

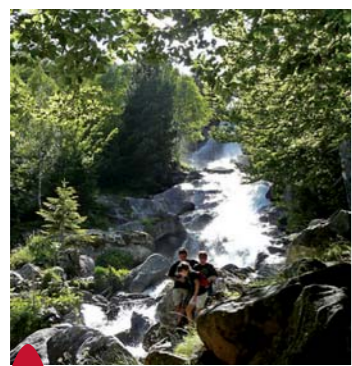
19 Vielha. Museu dera Val d'Aran. Central headquarters of the museums of Aran. Here you will find a synthesis of the history of the valley from the forming of the Pyrenees up to present day. Neolithic axes, Romanesque wood work, medieval swords...will accompany you on this historic route.



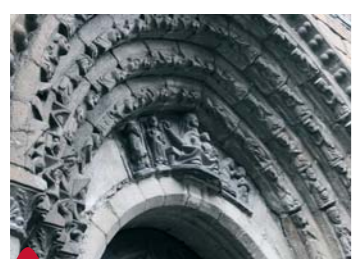
Wool Factory. Built at the end of the 14th century, this factory has been adapted for visitors. A specialized guide will accompany you on the tour where you will follow the complete elaboration process which took place in the factory - the transformation of virgin wool into yarn.

Ço de Rodes (Rodès Home). A beautiful stately home located on the Mayor Street with a well remodeled Renaissance façade.

Saint Michael's Church (RRd'Aran) and Mijaran's Menhir



20 The Molières Waterfalls and the Conangles Forest. On the southern side of Vielha Tunnel take the trail toward the Molières Valley which is crowned by the Molières peak (3010 m). This is the second highest peak in the Val d'Aran. The trail reaches the first waterfall in 30 minutes and goes through a beech tree forest which reaches its pinnacle in the autumn. This is a route suitable for all ages and fitness levels. On the opposite side of the highway Refugi (cabin) is an excellent starting point for a shorter excursion through the Conangles forest. Here you will find a perfect shady for picnic.



21 Church St. Estèue-Betren (RRd'Aran).

22 Escunhau - Church St Pèir (RRd'Aran) / Ço de Pèirjoan. Considered as the oldest house of the Valley, it conserves a magnificent Renaissance facade.

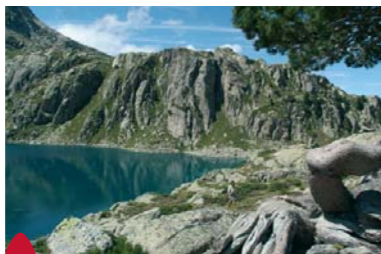
23 Casarilh - Era Immortela Brewery
A guided visit can be organized.



24 Church Sta. Maria (RRd'Aran). **Glèisa de St. Joan (RRd'Aran).** At the moment this Gothic church harbours temporary exhibitions.

Casa Paulet. From the XVI century, it possessed Renaissance windows and sculptures in the facade.

Ço de Portolà. From the old manor house of the Portolà, today a National Parador, it conserves the robust tower of the XVI century and the chapel of the XVII century.



25 Restanca and Lake Mar. Leaving from the town of Arties and following 7 km of forest asphalt footpath the Pònt of Ressec is acceded, from which one can begin the ascent to the Refuge of Restanca. Through the forests of firs and beech, oaks and black pine, the route climb up to the magnificent Lac de Mar (lake), 1600 m long and 500 wide. At the end of this circuit is the imposing glacial rock of the North Besiberri at 3015 m. altitude, one of the most beautiful summits of the Pyrenees.

26 Cò de Rosa- Gessa. It is a magnificent elegant house with an angled tower and Renaissance windows.

27 Church St. Andreu (RRd'Aran)



Mòla de Salardú - One of the watermills which milled the grain into flour.

Pryenmusèu Museum- A museum which allows the visitor to re-live the experiences of the first explorers and pioneers of the Pyrenees



28 Colomers. It is an obligatory trip to carry out on foot in the Val d'Aran in the outlying zone of the National Aigüestortes Park. A glacial basin origin surrounded by the nearby peaks at the 3000 meters with an exceptional panoramic view over more than 48 lakes. Reach from the town of Salardú (9.5 km forest asphalt footpath) until the **Banhs de Tredòs** (the highest thermal center

in Europe) and 3.5 km footpath without asphalt), from where you begin the ascent to the refuge of Colomers. In the summer months there is restricted access of vehicles from the Banhs de Tredòs. In these months a taxi service exists.

29 Church Sta. Eulària - Unha (RRd'Aran).

Ço de Brastet, built in the 1580, with angled turrets, arrow slits and other defensive elements, is constitutes one of the most beautiful example of civil architecture.



Museu dera Nheut (the Snow Museum)
A museum which explains the evolution and importance of the snow, the ski resort and the snow sports of our region.



30 Bagergue- Church St. Fèlix (RRd'Aran) / Museu deth Corrau. Bagergue - Saint Fèlix Church (RRd'Aran) / Corrau Museum Contains a collection of more than 2500 agricultural instruments and depicts the traditional daily lifestyle. In the village, a tour of the **Tarrau Hormatgeria** (Cheese Factory) can be arranged along with a tasting of various cheeses.

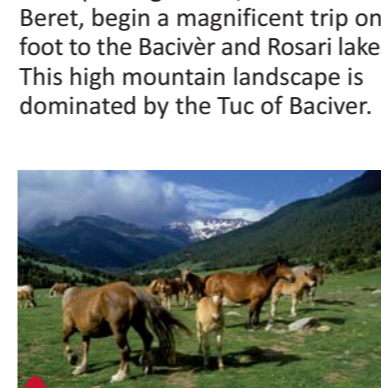
31 The Zinc Mines of Montoliu extend through a beautiful place between the homonymous Lake and the port of Urets.



32 Mines of Liat, in a "mineral landscape" was mined from the XVIII century until to mid XX century.

33 Church Sta Maria de Cap d'Aran - Tredòs (RRd'Aran).

34 Glacial Basin of Baciver. From parking in Orri, the Plan of Beret, begin a magnificent trip on foot to the Bacivèr and Rosari lakes. This high mountain landscape is dominated by the Tuc of Baciver.



35 Plan de Beret, the wealth of pastures, have attracted the towns shepherds from prehistory (II-I millennium BC). Proof of this is in the necropolis, of the monoliths and other archaeological monuments to contemplate.



36 Montgarri. The landscape close to the old sanctuary is of a

spectacular beauty, located between grasslands and forests, near Noguera Pallaresa, surrounded by absolute tranquility. Access from Beret, through 6 km of un-asphalted forest footpath. We found two shelters equipped to eat and sleep.



37 Saboredo Lakes. The Ruda Valley is an extraordinary example of valley of glacial origin, with forest of black pine that occupy the entire riverside. This valley is very visible from the highway of Baqueira to the Bonaigua. In the cirque of Saboredo numerous lakes exist that they remain closed by steep peaks that appear throughout the cirque, until in the border of the Pallars. The footpath begins 1500 of Baqueira. Once over the bridge on the Ruda River open your eyes to some fabulous grassland with small cabins decking a marvellous landscape. It is advisable leave the vehicle at the Locampo Bridge to enjoy this marvellous place.

38 Port de Vielha (Vielha Pass).

A natural path which follows the original mountain pass used as the principal communication route between the Aran and Ribagorza regions (16,5 km total distance). The trail is marked with GR-211-5 signs and reaches 2,423 meters in altitude.

www.visitvaldaran.com

VAL D'ARAN

The essence of the Pyrenees

Romanesque Route of Aran (RR d'Aran)



Through the route, get to know the varied and singular artistic heritage that has been conserved in the aranes churches. From the elegance and sobriety of Romanesque architecture and Gothic of the churches of Bossòst, Salardú, Arties, Unha and Cap d'Aran, passing through the sculptural decorations of many doors and baptismal pillars, arrive at the artistic excellence in wooden sculptures. The Christ of Mijaran, along with those of Salardú, Escunhau and Casarilh - as the last two exhibitions shown in Vielha museum-demonstrate. Prepare to be surprised by the extensive pictorial original group, of diverse styles (Romanesque, Gothic and Renaissance) along with their colours full of life and expressive scenes which decorate the walls of the churches of Arties, Unha, Salardú, Cap d'Aran and Vielha.

+i Tourist information office

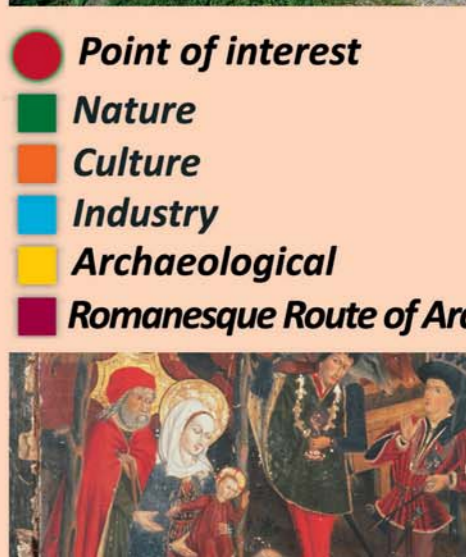
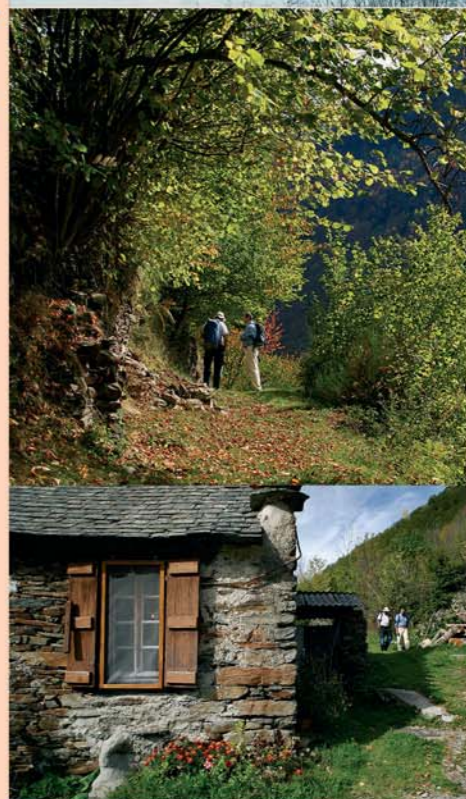
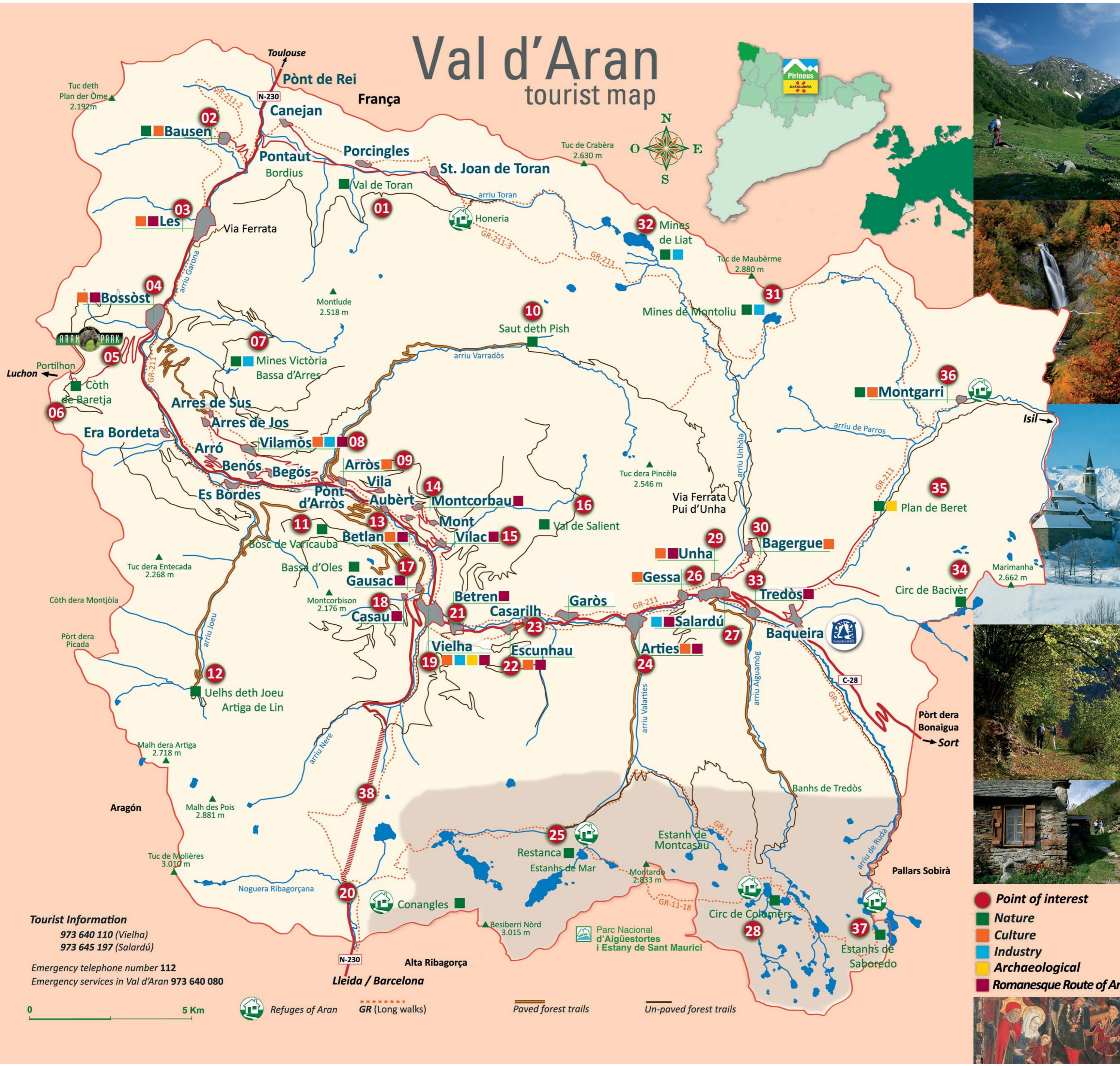
Vielha	(+34) 973 64 01 10	o.torisme@aran.org
Salardú	(+34) 973 64 51 97	o.s.torisme@aran.org
Arties	(+34) 699 96 90 44	
Bossòst	(+34) 973 64 72 79	
Les	(+34) 973 64 73 03	

www.visitvaldaran.com

Conselh Generau d'Aran foment TORISME VAL D'ARAN Pirineus GASTRONOMIA

Val d'Aran

tourist map



- Point of interest
- Nature
- Culture
- Industry
- Archaeological
- Romanesque Route of Aran

Tourist Information
 973 640 110 (Vielha)
 973 645 197 (Salardú)
 Emergency telephone number 112
 Emergency services in Val d'Aran 973 640 080

0 5 Km Refuges of Aran GR (Long walks) Paved forest trails Un-paved forest trails