




Val d'Aran MOUNTAIN HUTS




ADVICES

 Prepare in detail your mountain equipment needed for your activity so that it adjusts to the meteorological and technical conditions that you may encounter.

 Book a place before accessing the refuge. Find out and hire the services of a guide.

 Always let others know about your route and notify when you have finished your activity.

IN THE EVENT OF AN ACCIDENT, KEEP CALM, PROTECT YOURSELF AND NOTIFY AS QUICKLY AS POSSIBLE TO:

 **(+34) 973 64 00 80 112**

+ INFORMATION

Meteorology:
www.conselharan.org/meteo/
www.meteocat.cat

Avalanche bulletin: www.lauegi.report

Reservations: www.refusonline.com
www.entrepry.com

Aran Valley Guides Association:
www.aranguides.com



THE OPERATION OF A MOUNTAIN HUT

HOW DOES A MOUNTAIN REFUGE WORK?

Mountain refuges are **sport facilities located in strategic points of the mountain to welcome mountaineers on their journeys and ascents.** They are designed for a **very communal coexistence** and offer **services corresponding to their localization and access difficulty.**

They do not have municipal water, electricity nor gas networks to which they can connect to. This means that **the amenities, as well as the services offered, are always very limited.**

For these reasons, you must behave differently from how you do in your places of residence.

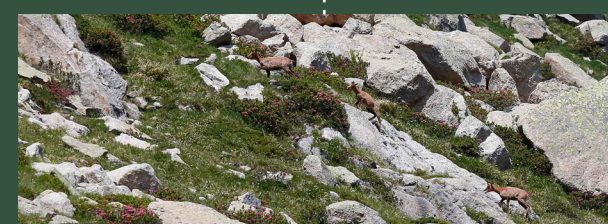
OBSERVE, ASK AND YOU WILL LIVE A UNIQUE EXPERIENCE.



GUARDS

They are **mountaineers who maintain and repair the facilities**, in addition, they do everything in their hands to make the stay in the refuge an unforgettable experience.

On the other hand, **they inform visitors and collaborate in mountain rescues.** They are the ones in charge of the **environmental, installation and emergency protocols.**



ENVIRONMENT AND INSULATION

Located in a variety of privileged natural environments, it is mandatory not to disturb these places. **Respect the flora and fauna, follow the paths and avoid loud noises and screaming.** Isolation is part of the charm of these shelters but it also imposes certain challenges, such as **supplying the goods, which is carried out by the guard, often with unusual means (4x4, helicopter or on foot), a fact that makes products more expensive.**



WASTE

Take care of your waste. You must take with you every waste you produce at the mountain. Dump it as soon as you find a recycling dumpster.

Everything aside of paper and organic waste (that can be processed in the refuge), such as: glass, plastics, cans and other materials **have a high cost of treatment.**



SERVICES accommodation and meals

Refuges are different from restaurants and hotels since they have a very specific operation, and **therefore only one menu is usually offered at meals.**

Both the rooms and the services are to **be shared with others**, therefore, coexistence and tolerance are essential.



WATER AND ENERGY

Despite what it may seem from the environment, **refuges' water catchments are limited so you have to be very careful with its consumption.** Likewise, management and treatment of wastewater requires stricter protocols.

The supplies are very specific and have a high maintenance cost, therefore, **it is necessary to economize** as much as possible on their use and properly maintain their insulation, **paying special attention to doors and windows.**



EXPERIENCE IN THE REFUGE

For children, staying in a mountain refuge is the best way to start hiking and learn the values of nature.

Staying at the refuges as a family is a lasting experience for the little ones.

REFUGI DE SABOREDO



1

Naut Aran. Circ de Saboredó.
2.310 m

From Baqueira take the Ruda track to the parking. Continue on foot to the refuge for 2 h.
28 beds in shared rooms.

Ascents to the summits of the Circ de Saboredó and journeys between refuges in Colomèrs and Amitges, GR 211-4, HRP, Carros de Foc.

Since the end of January to the end of April and from 10th June to 15th October. Full information: refusaboredó.com

www.refusaboredó.com 0034 973090914

REFUGI DE COLOMÈRS



2

Naut Aran. Circ de Colomèrs.
2.135 m

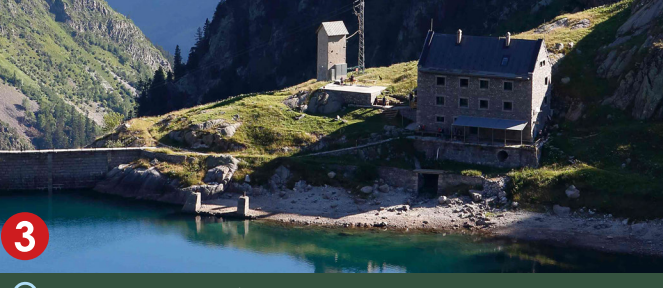
From Salardú take the forest track to the *Banhs de Tredós* spa. Taxi service in summer. Continue on foot to the refuge for 2 h from *Banhs de Tredós* spa and 1 h from taxi parking.
60 beds in shared rooms.

Ascents to the summits of the Circus de Colomèrs and journeys between the Saboredó and Refugi dera Restanca. GR 11. HRP, Carros de Foc.

Winter: february, march & april. Summer: June, July, August & September. Full information: refusonline.com

www.refugicolomers.com 0034 973253008

REFUGI DERA RESTANCA



3

Naut Aran. Valarties.
2.010 m

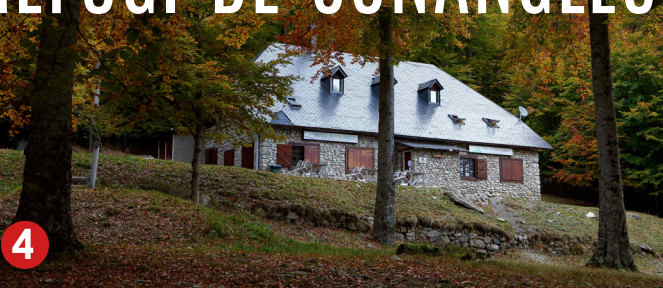
From Arties to the Pont de Ressec's parking. Continue on foot to the refuge for 2 h.
70 beds in shared rooms.

Ascents to the Montardo, North Besiberri and summits of the Circ de Rius. GR 11-18. HRP, Carros de Foc.

Winter: february, march & april. Summer: June, July, August & September. Full information: refusonline.com

www.lacentralderefugis.com/refugios/restanca/
0034 608036559

REFUGI DE CONANGLES



4

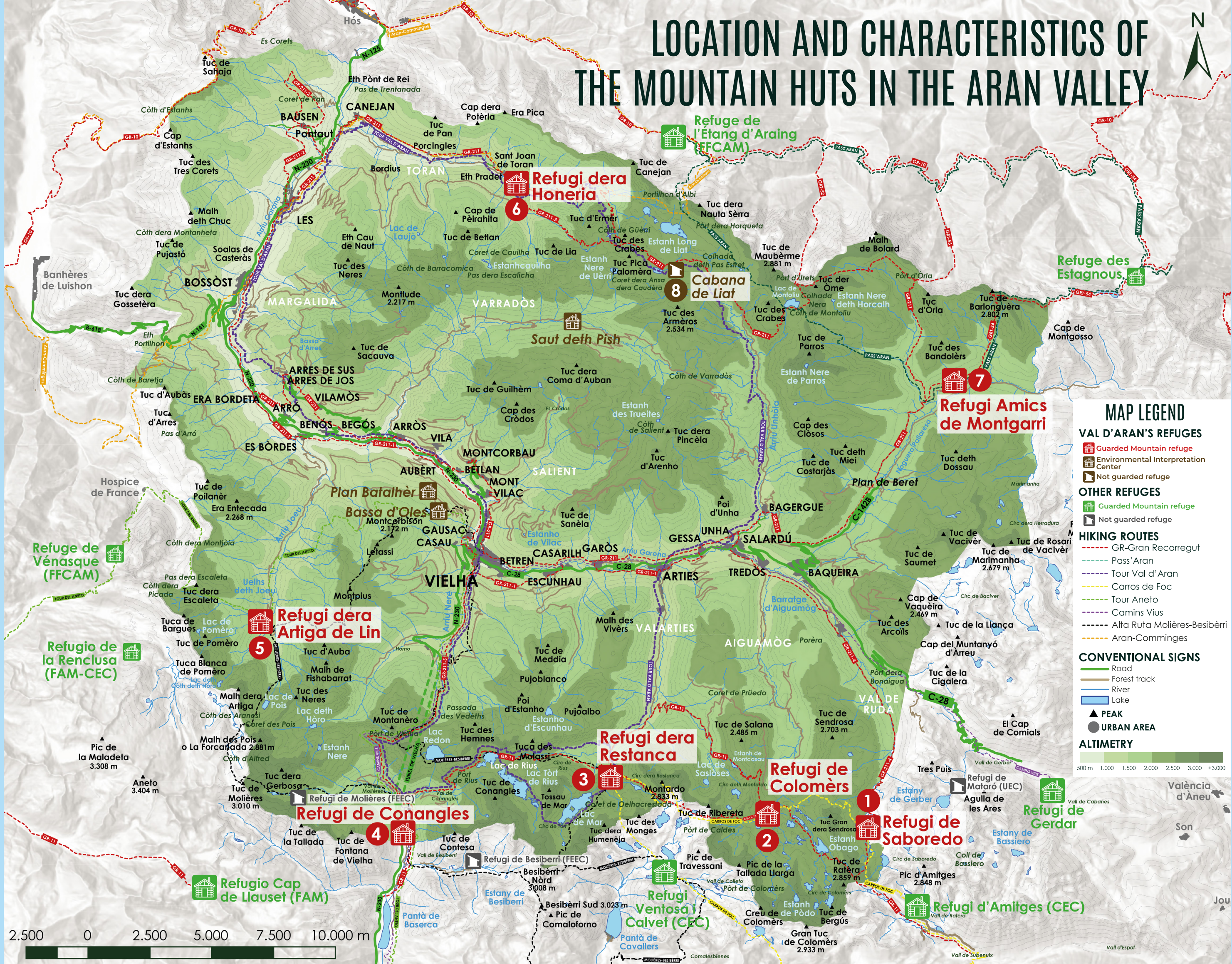
Vielha e Mijaran. South side of the Vielha's tunnel.
1.555 m

By car. From N-230 Lleida-Vielha Km 150. Parking of Conangles.
36 beds in shared rooms.

Ascents to Mollières, south Besiberri. GR 11. GR 211-5. HRP, Aguas del Aneto.

From 10th. June to 10th. September, the rest of the year availability under reservation. Full information: refusonline.com

www.eraportadaran.com/refugi-de-conangles/
0034 696649871



LOCATION AND CHARACTERISTICS OF THE MOUNTAIN HUTS IN THE ARAN VALLEY

MAP LEGEND

VAL D'ARAN'S REFUGES

- Guarded Mountain refuge
- Environmental Interpretation Center
- Not guarded refuge

OTHER REFUGES

- Guarded Mountain refuge
- Not guarded refuge

HIKING ROUTES

- GR-Gran Recorregut
- Pass'Arán
- Tour Val d'Aran
- Carros de Foc
- Tour Aneto
- Camins Viús
- Alta Ruta Mollières-Besibèrri
- Aran-Comminges

CONVENTIONAL SIGNS

- Road
- Forest track
- River
- Lake
- PEAK
- URBAN AREA

ALTIMETRY

500 m 1.000 1.500 2.000 2.500 3.000 +3.000

HIKING ROUTES

PASS'ARAN
Tour around the heart of the mountains of Ariège and Val d'Aran.
Stages: 5 days
Walking time/day: 5 - 10 h
Elevation gain/day: 270 - 1.450 m
Min/max height: 940 m / 2.519 m

TOUR DERA VAL D'ARAN
Medium and high mountains tour around Val d'Aran.
Stages: 4 to 7 days
Walking time/day: 5 - 6 h
Elevation gain/day: 500 - 1.150 m
Min/max height: 610 m / 2.500 m

CARROS DE FOC
Trail of high mountain range linking 9 PNAESM's mountain huts.
Stages: 6 days
Walking time/day: 3 - 7 h
Elevation gain/day: 500 - 1.055 m
Min/max height: 1.900 m / 2.400 m

TOUR DEL ANETO
Big route around the massif of Maladetes through the most emblematic peaks in the history of pyreneism.
Stages: 8 days
Walking time/day: 4 - 9.30 h
Elevation gain/day: 525 - 1.270 m
Min/max height: 980 m / 2.450 m

CAMINOS VIUS
Circular hiking surrounding the National Park of Aigüestortes and the Sant Maurici Lake.
Stages: 5 days
Walking time/day: 5.30 - 7.30 h
Elevation gain/day: 515 - 1.180 m
Min/max height: 980 m / 2.450 m

CAMIN REIAU
Hiking and cultural paths along the 33 villages of Val d'Aran.
Stages: 8 days
Walking time/day: 3 - 6 h
Elevation gain/day: 186 - 966 m
Min/max height: 610 m / 1.875 m

ALTA RUTA MOLLIÈRES-BESIBÈRRIS
Alpine tour to discover the incredible Maladeta and Besiberri's massifs in a high mountain atmosphere.
Stages: 6 days
Walking time/day: 5 - 9 h
Desnivel per dia: 750 - 1.700 m
Min/max height: 975 m / 3.023 m

RUTA ARAN COMMINGES
Singular tour around occitan lands and surroundings.
Stages: 7 days
Walking time/day: 5.30 - 7 h
Elevation gain/day: 525 - 1.675 m
Min/max height: 545 m / 2.445 m

ENVIRONMENT INTERPRETATION CENTERS

Are facilities that are open throughout the summer season to teach about environmental guidelines to anyone interested.



BASSA D'OLEs
A pond with glacial origins with an aquatic ecosystem full of life, specially rich in dragonflies and amphibians.



PLAN BATALHÈR
A quiet recreational space, where while having our meal we can listen to birds such as the titmouse titmouse, the nuthatch or the jay. And if what you are interested in are trees, you can discover all the native specimens.



SAUT DETH PISH
The water challenges us from all sides, creating livelife spaces in the waterfalls, in the calm of the water or in the fog, the rain and the snow that wet a valley dyed with beech and fir.

REFUGI ARTIGA DE LIN



5

Es Bòrdes. Val deth Joèu.
1.470 m

By car. From Es Bòrdes take the forest track to Artiga de Lin. In summertime, vehicle access restrictions.
28 beds in shared rooms.

Ascents to the Forcanada, Aneto. PR 115. Tour del Aneto.

From 10th. June to 10th. September, the rest of the year availability under reservation. Full information: refusonline.com

www.artigadelin.com 0034 662594444

REFUGI DERA HONERIA



6

Canejan. Val de Toran.
1.015 m

By car. From the N-230 parking towards *Sant Joan de Toran*.
30 beds in shared rooms.

Ascents to Tuc de Hermer, Montludè. GR 211. Tour Val d'Aran.

www.lacentralderefugis.com/refugios/era-horeria/

REFUGI AMICS DE MONTGARRI



7

Naut Aran. Valley of Noguera Pallaresa.
1.675 m

By car or by foot. From Beret's parking continue 6 km along the track towards Isil.
35 beds in shared rooms and 4 beds in private rooms with their own amenities.

Ascents to the Tuc de Maubèrme, Tuc de Milh. GR 211. Pass'Arán

Winter: 1/12 - 15/04. Summer: 1/06 - 15/11. Full information: refusonline.com

www.refugimontgarri.com 0034 639494546

LIAT'S EMERGENCY HUT (NOT GUARDED)



8

2.354 m

Access on foot from Val de Toran takes 3h 45 min. From Bagergue, off road track and on foot takes 40 min from the Pas Estret.

8 seats

Ascents to Maubèrme, Pica Palomèra, Tuc des Armèros and Sèrra de Crabèra, GR 211, Setau Sagèth.

Equipped with emergency transmitter.